



Backwell Playhouse Technical Specification

Issue 1
February 2023



Introduction

Scope

This document has been prepared to provide information to allow users of the Playhouse to plan their productions. Not all information is available at the time of publication and will be added in later issues.

Over the life of the Playhouse various facilities have been added and other redundant facilities have been removed. There are also facilities which remain in place but are now redundant. Some of these are still being investigated. Only those facilities that are currently operational are listed in this specification.

This document will be updated as facilities change. It is therefore important to ensure you are using the latest version of this document which is available on the Playhouse's website at: www.backwellplayhouse.co.uk

The Space

The Playhouse is an intimate 99 seat performance space with a stage area at ground level and a fixed raked auditorium with fixed theatre seating.

There is a foyer/bar to the side of the auditorium and a dressing room behind the stage which forms the crossover.

There is a control room at the rear of the auditorium for all sound, lighting and cinema facilities. The control room has a removable sliding window to the auditorium.

Equipment

The available equipment is listed in the relevant section of this document.

As not all equipment is used for every production; unused equipment is stored. Users should advise the Playhouse Management in advance of the production which of the listed equipment they require to ensure it is available.

Detailed specifications and operating instructions for all the Playhouse equipment are mostly available on-line so are not included in this specification. Most of the operating manuals can be provided on request.

Explanations and guidance on the use of the Playhouse systems can be provided by the Playhouse Technical Team.

All equipment brought into the Playhouse must be safe and suitable for use. The Playhouse Management reserves the right to refuse the use of any equipment which, in their opinion, is unsafe for the intended use. Electrical equipment should have a valid test certificate.

Problem reporting.

Any currently known faults are listed here, please report any other faults or problems with the technical equipment to the Playhouse Management.

Faulty circuits:

- Lighting circuit 53 on FOH 2.
- Sound tie-line 3 Up Stage Left



Stage

Overview

The stage is at ground level with an overhead proscenium.

There is no solid proscenium at the sides with masking drapes stage left and right.

The space can, therefore, be set-up as a proscenium stage with masking flats and wing space or completely open. The normal mode is as a proscenium stage with three masking flats either side of the stage.

There is a gallery over the stage left wing accessed by a fixed vertical ladder.

Note: There is a structural bar that crosses the gallery at approximately 1.1m high, extreme care should be taken by personnel accessing the gallery.

Dimensions

Proscenium opening: 7.14 m wide x 3.08 m high with masking in place but could be opened to full width of the space.

Depth: Proscenium to back wall 4.0 m

See plans for details

Back Wall & flats

The back wall is wood panelled and painted black, as are the masking flats.

The side walls are stone and also painted black. It may be possible to paint any of these items with permission from the Playhouse committee; they are to be reverted back to black when finished. Fittings are not to be painted.

Stage Floor

The stage is wood panelled and painted black. It may be possible to paint the floor with permission from the Playhouse committee; the floor is to be reverted back to black when finished.

Electrical Services

There are various electrical service points and tie-lines around the stage and auditorium these are documented in the relevant sections of this specification.

Working lights

All the working lights are operated from a panel in the DSL corner.

There are working lights (whites) on the stage side of the proscenium, over the apron space, on the gallery and in the wings.

There are two high power LED floods located on FOH 2.

There are performance Blues in the wings.



Communication and Stage-Management Facilities

- A Single channel Ring Intercom system with four belt-packs with single muff headsets is available. There are several connection points around the stage and in the control room as shown on the service points plan.
- There is a show relay to the dressing room and the foyer/bar, the amplifier is housed in the sound rack in the control room. A calls microphone is available for call to the dressing room and/or the bar/foyer, this is operated from the control room.
- The auditorium is equipped with a hearing aid loop operated from the control room.



Lighting

Overview

There are three lighting barrels on stage and two front of house all with interwired barrels with 15A sockets. There are front of house wall bars either side of the auditorium and one at the rear of the auditorium also with interwired barrels. There is also a fourth stage bar upstage without any circuits as well as four unwired upstage to downstage bars. Note that the stage right bar is lower than the rest.

All bars are fixed.

In addition, there are three dip circuits on the wall DSR and six on either side of the stage back wall.

Note: The dip circuits on the back wall have been painted over and, while believed to be usable, may require the paint to be removed before use.

Note: There is a video projector permanently mounted in the centre of FOH 2.

Rigging

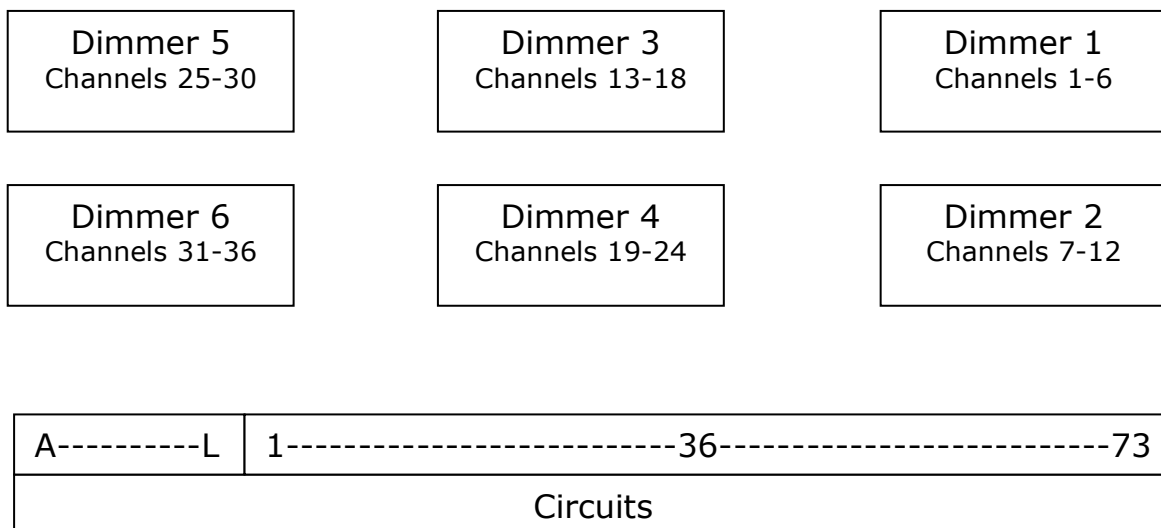
There is no standard rig for the Playhouse so the rig will usually be whatever was left from the previous production. Some pre-rigging for productions may be possible depending on the schedule.

Dimmers

36 channels of Zero88 Betapack 3 dimmers located on the gallery. Main power for the dimmers is controlled from here.

Circuits

Lighting circuits are shown on the diagram. All circuits are patchable via a 15A patch at the dimmers.



Note: The patch cables are not long enough to reach all the way across the dimmers. Circuit 73 will not reach Dimmer pack 5 for example. The circuits in the centre will reach to all dimmers.



Control

ChamSys QuickQ 30 located in the control room.

Remote control of the lighting can be achieved with a free app available from ChamSys. Operation of the desk is enhanced by the use of this app on an Android tablet or iPad. This is not included in the Playhouse equipment.

Lanterns

Conventional

- 4 off ETC Source 4 26 575W profile spot (fixed 26°)
- 4 off ETC Source 4 Junior 575W profile spot (variable 25° to 50°)
- 2 off Strand Quartet 22-40 650W profile spot (variable 22° to 40°)
- 1 off Strand Patt 23N 500W profile spot (fixed 11°) *-with iris*
- 1 off Strand Patt 23 500W profile spot (fixed 20°) *-no shutters, iris available*
- 6 off Strand/Selecon Rama 150 1KW Fresnel spot 7° to 50°
- 6 off Strand Prelude 650W Fresnel spot 9° to 40°
- 6 off Strand Quartet 650W Fresnel spot 10° to 40°
- 2 off Strand Quartet 650W prism convex spot 10° to 55°
- 12 off CCT Minuette 650W Fresnel spot 18° to 57°
- 2 off Strand Minim 500W Fresnel spot 12.5° to 55°

LED

- 8 off Martin Rush Par 2 LED Par 10° to 60°
- 5 off LEDj Wash Stratos LED flood 120°

*All conventional lanterns have colour frames.
All Fresnels and PCs have barndoors except Minims.
There are barndoors for three of the Rush Pars.*

DMX Allocations

The DMX channels for all equipment are set as shown below. These may be changed but must be returned to these settings at the end of the booking. The fixtures are labelled with the channels.

| DMX Channel | Fixture |
|-------------|----------|
| 1 – 36 | Dimmers |
| 37 | Rush Par |
| 46 | Rush Par |
| 55 | Rush Par |
| 64 | Rush Par |
| 73 | Rush Par |
| 82 | Rush Par |

| DMX Channel | Fixture |
|-------------|--------------|
| 91 | Rush Par |
| 100 | Rush Par |
| 109 | Stratos Wash |
| 112 | Stratos Wash |
| 115 | Stratos Wash |
| 118 | Stratos Wash |
| 121 | Stratos Wash |



Other Lighting Equipment

2 off stands with Tee bars

A stock of 15A cables, adapters and DMX cables are available.



Sound

Overview

The Playhouse has a sound system suitable for playing sound effects, auditorium music playback, basic PA etc.

The system may require augmenting for bands or large scale sound reinforcement.

Set-up

There are four speakers mounted, as shown on the service points plan, as a FOH stereo pair and in the upstage corners.

These are driven by two Norton N300 (2x120W) amplifiers housed in the sound rack in the control room.

There are several sound tie-lines around the stage and auditorium, as shown on the service points plan and detailed below, which run to a connector panel in the control room. All but one of the tie-lines have both XLR and ¼ inch Jack connectors, these are paralleled-up and cannot be used simultaneously. All lines are balanced.

| Line | Location | Connector(s) | Contol Rm Box Connector(s) |
|------|-------------------|----------------|----------------------------|
| 1 | Down Stage Right | XLR-M & Jack-F | XLR-F & Jack-F |
| 2 | Down Stage Right | XLR-F & Jack-F | XLR-M & Jack-F |
| 3 | Up Stage Right | XLR-F & Jack-F | XLR-M & Jack-F |
| 4 | Audit. Left Rear | XLR-F & Jack-F | XLR-M & Jack-F |
| 5 | Not used | | XLR-M & Jack-F |
| 6 | Not used | | XLR-M & Jack-F |
| 7 | Down Stage Left | XLR-M & Jack-F | XLR-F & Jack-F |
| 8 | Down Stage Left | XLR-F & Jack-F | XLR-M & Jack-F |
| 9 | Up Stage Left | XLR-F | XLR-M & Jack-F |
| 10 | Audit. Right Rear | XLR-F & Jack-F | XLR-M & Jack-F |
| 11 | Not used | | XLR-M & Jack-F |
| 12 | Not used | | XLR-M & Jack-F |

There is also an 8 send 4 return sound snake with the stage box in the DSL corner and tails in the control room.

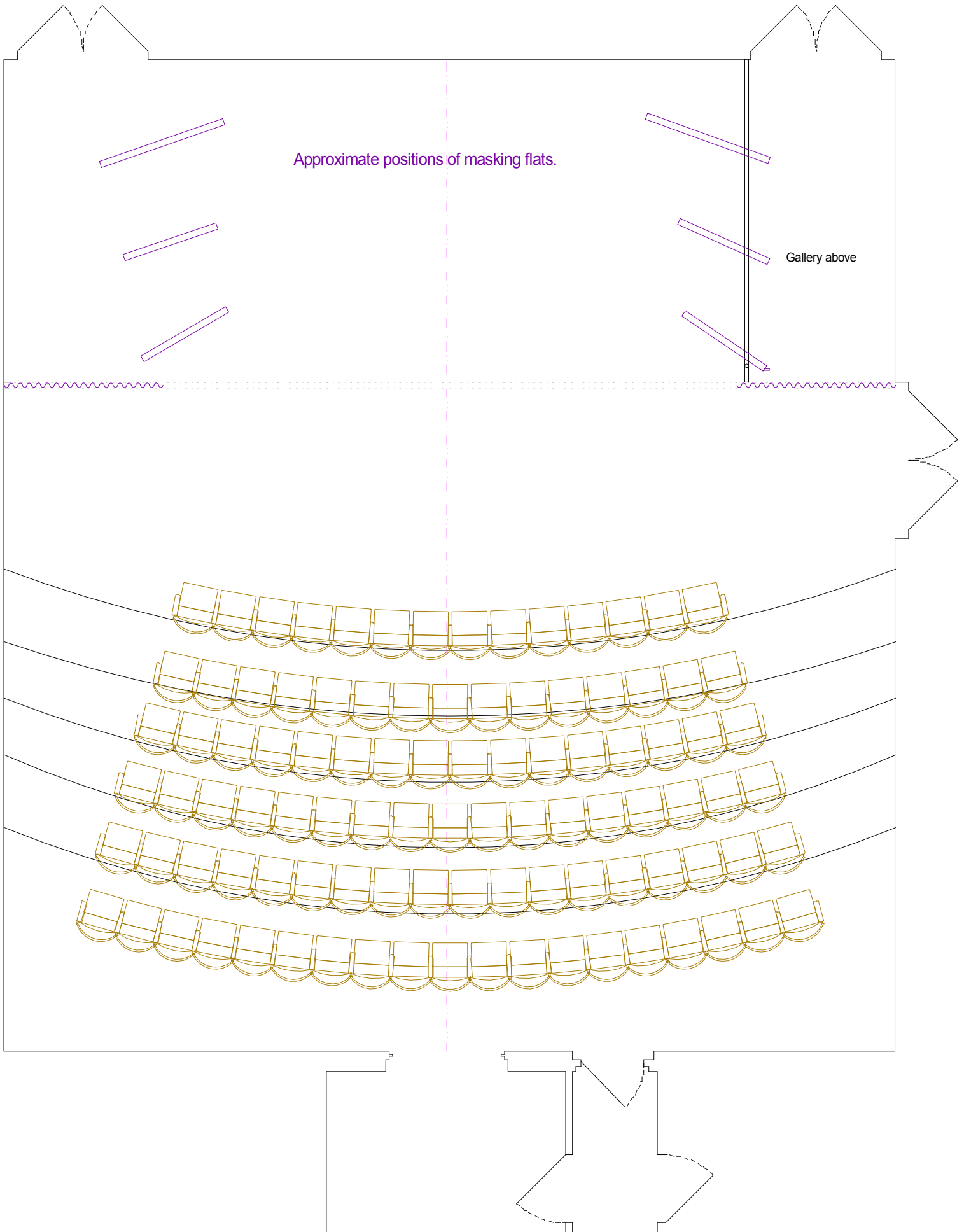
Other available sound equipment

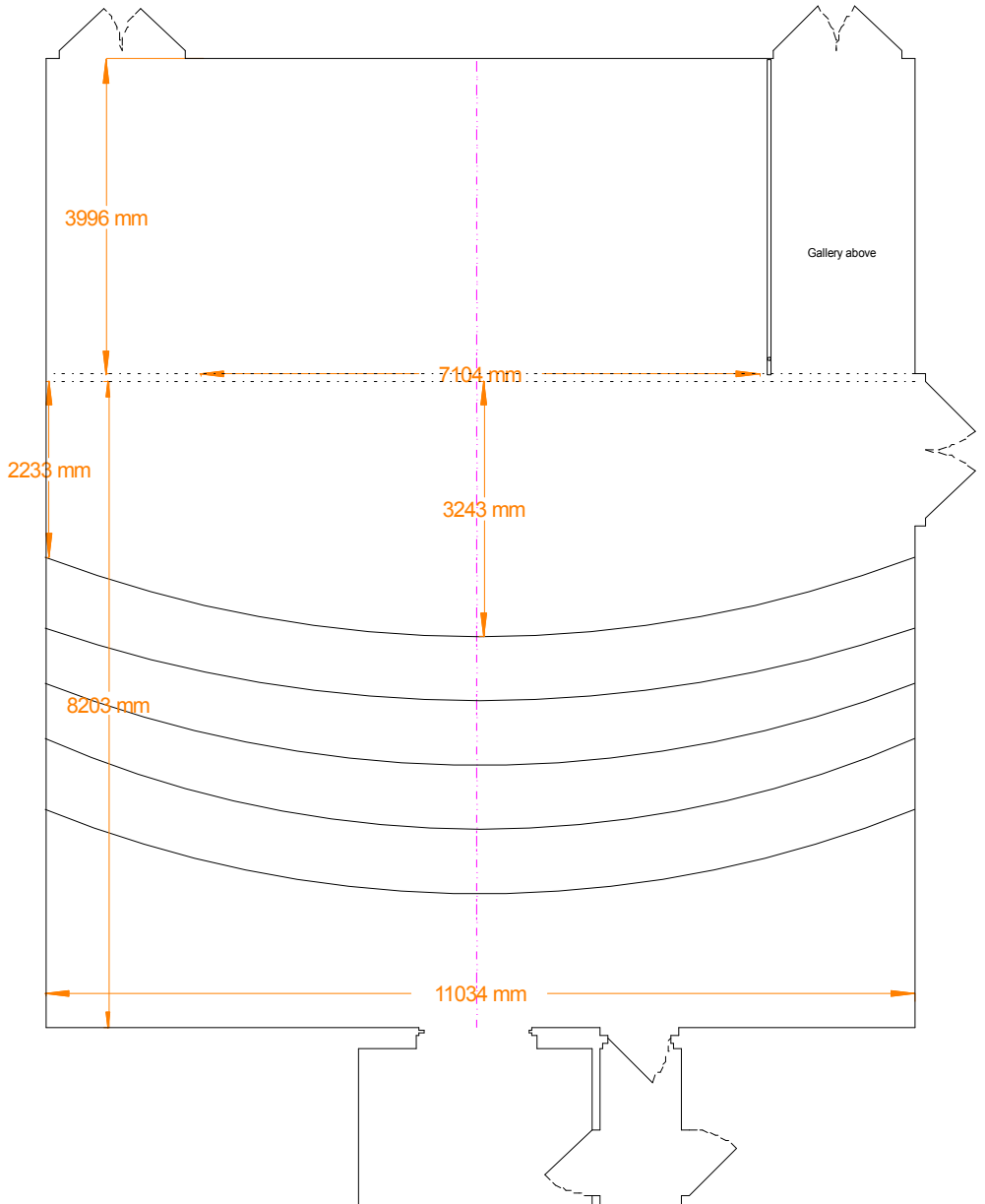
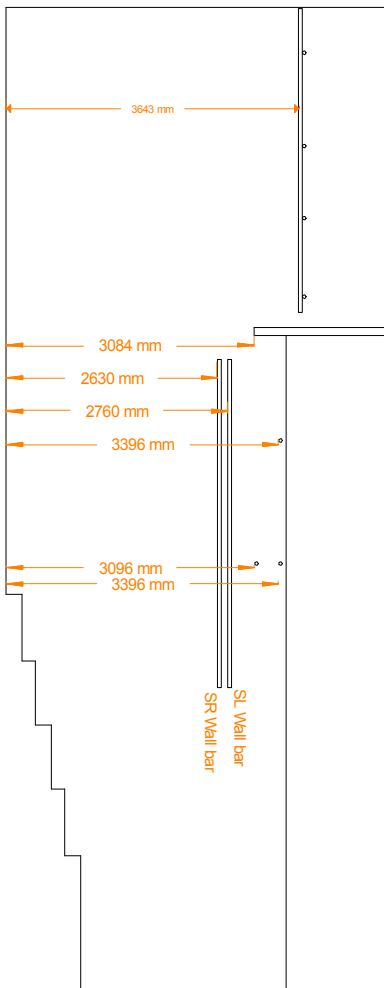
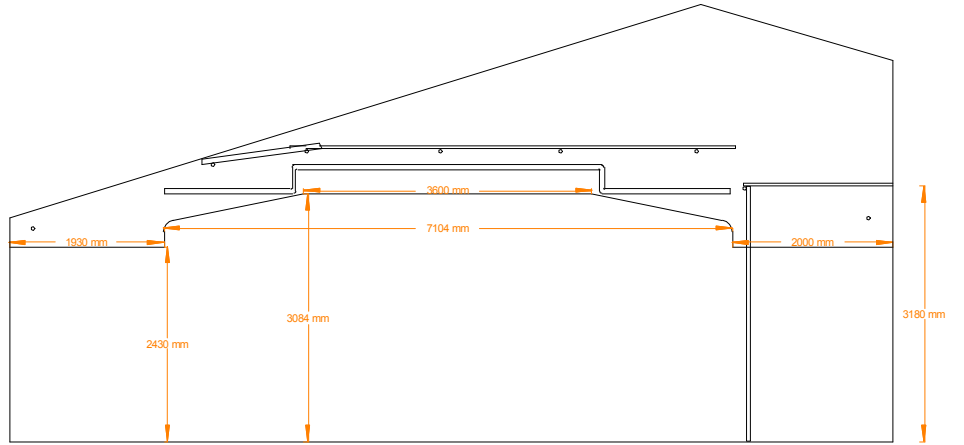
- Allen and Heath Z14 Mixer
- Phonic MU1002 Mixer
- Pulse CDP50 CD Player
- PC running ShowCue System
- Stock of microphone cables



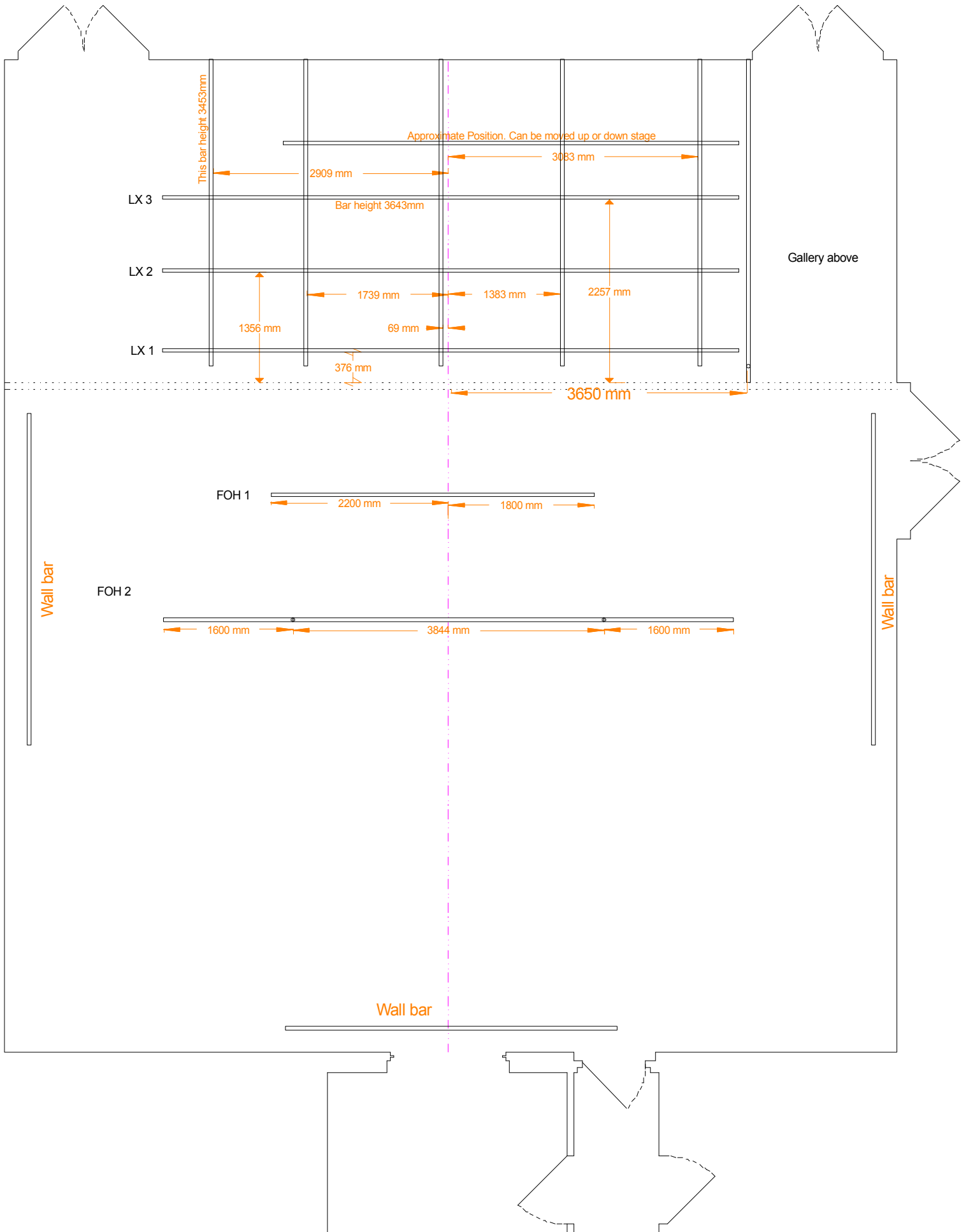
Audio Visual

The cinema facilities are not currently documented and will be added in a later issue of this document.

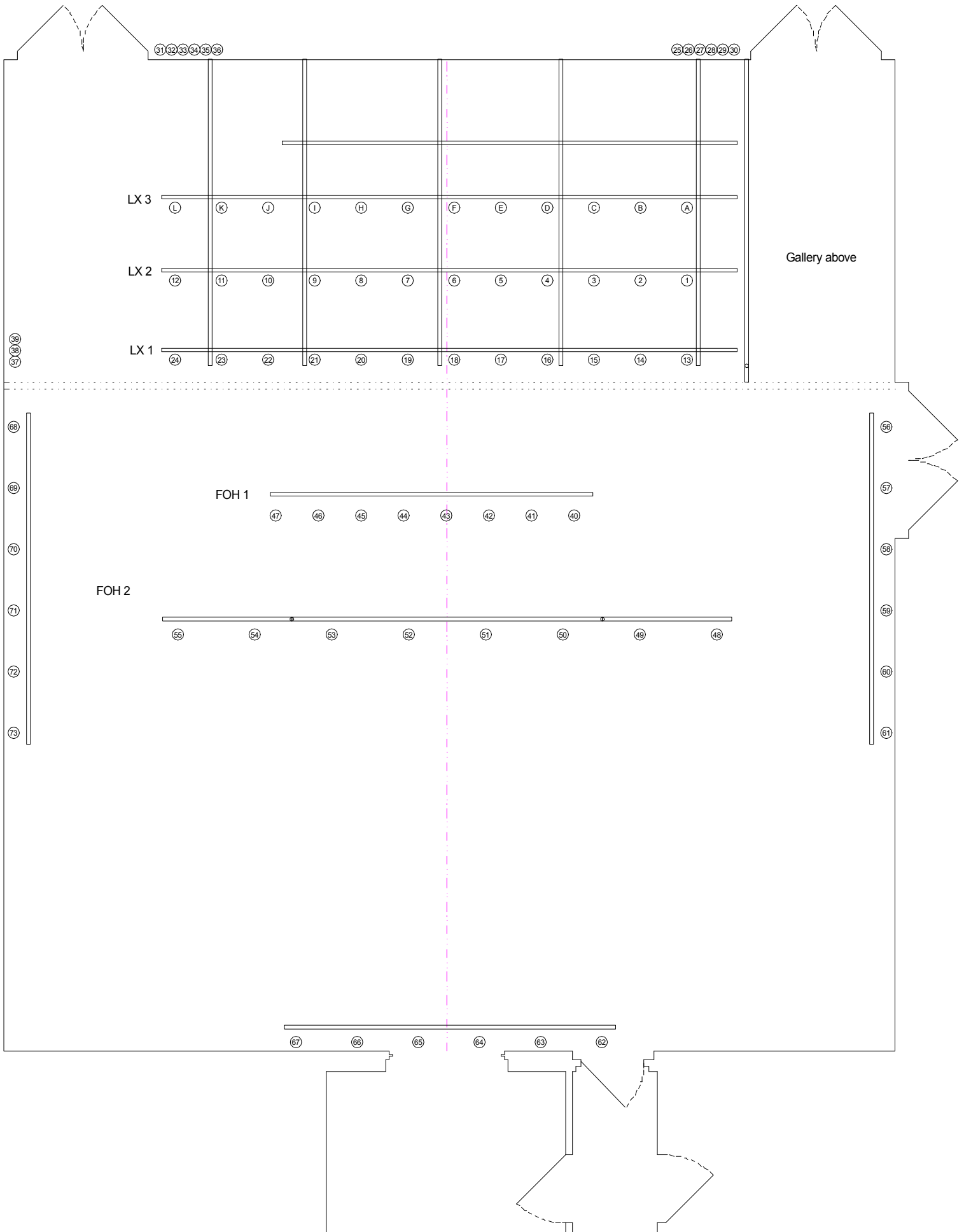




Backwell Playhouse Technical Specification



Backwell Playhouse Technical Specification



Backwell Playhouse Technical Specification

